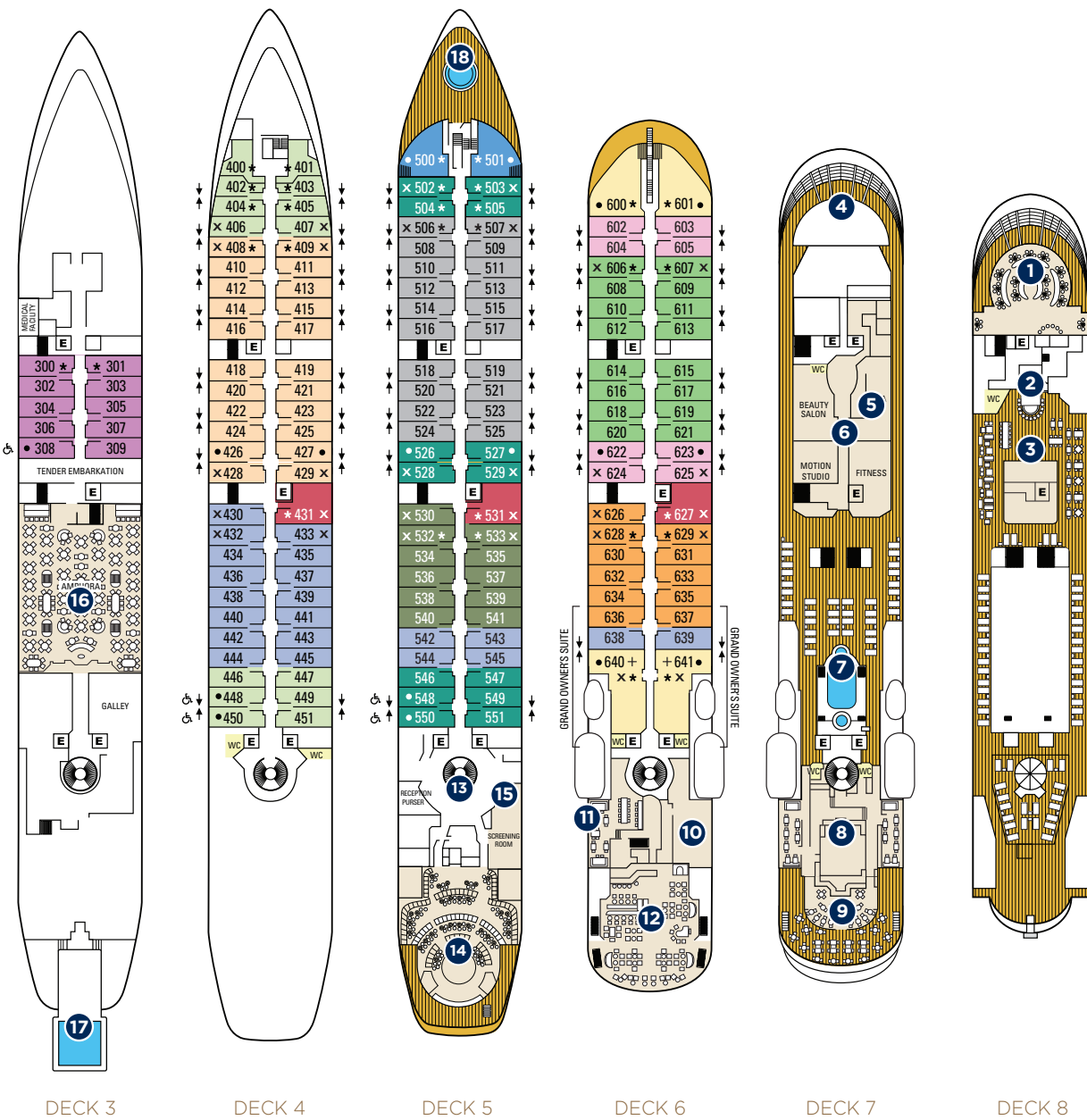


STAR BREEZE



ONBOARD SPACES

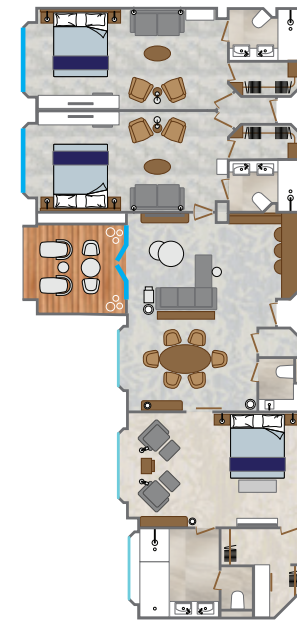
- | | | |
|----------------------------------|----------------------|-------------------------|
| 1 Yacht Club Café & Library | 7 Pool and whirlpool | 14 Lounge |
| 2 Star Bar | 8 Courtyard | 15 Screening Room |
| 3 Star Barbecue | 9 Veranda/Candles | 16 AmphorA Restaurant |
| 4 Bridge | 10 Signature Shop | 17 Watersports Platform |
| 5 WindSpa | 11 Restaurant | 18 Whirlpool |
| 6 Fitness Center & Motion Studio | 12 Compass Rose | |
| | 13 Reception | E = Elevator |
| | | WC = Public Restroom |

CABIN TYPE DECK

Owner's Suite	Deck 6	OW
Classic Suite	Deck 5	CS
Deluxe Suite	Deck 4/5/6	DS
Star Balcony Suite	Deck 6	SBS1
Balcony Suite	Deck 6	BS1
Star Balcony Suite	Deck 5	SBS
Balcony Suite	Deck 5	BS
Ocean View Suite	Deck 6	S3
Ocean View Suite	Deck 5	S2
Star Ocean View Suite	Deck 4/5/6	SS1
Ocean View Suite	Deck 4	S1
Ocean View Suite	Deck 4	S
Star Porthole Suite	Deck 3	SP

- Access to board ship is via stairs only.
- Access to/from outside deck may require assistance with doors and thresholds.

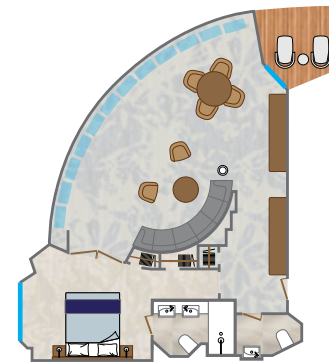
- + RESTRICTED VIEW
- ‡ ADJOINING SUITES
- E ELEVATOR
- * ALSO INCLUDES BATHTUB
- ONE QUEEN SIZE BED ONLY (no twin option)
- x 3RD BERTH AVAILABLE
- ♿ MODIFIED ACCESSIBLE SUITES
Feature a full-size bed (no twin option)
Suites 308, 448, 450, 548, & 550 are modified accessible, shower only with a small lip into shower, only one sink, a step into the bathroom with a portable ramp, standard interior and exterior doorways.



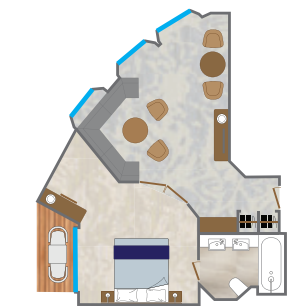
GRAND OWNER'S SUITE



OWNER'S SUITE MIDSHIP



OWNER'S SUITE FORWARD



CLASSIC SUITE



DELUXE SUITE



STAR PORTHOLE SUITE



STAR BALCONY SUITE



STAR OCEAN VIEW SUITE



BALCONY SUITE



OCEAN VIEW SUITE

SHIP FACTS

- GUEST CAPACITY: 312
- GUEST DECKS: 6
- CREW MEMBERS: 188-190
- LENGTH: 522 feet (159 meters)
- BEAM: 62 feet (19 meters)
- DRAFT: 17.7 feet (5.4 meters)
- CRUISING SPEED: 15 knots
- PROPULSION: Twin propeller, driven by two Wartsila diesel engines
- TONNAGE: 12,995 gross registered tons (grt)
- SHIP'S REGISTRY: Bahamas

ALL-SUITE SHIP

Grand Owner's Suites, 3 Bedroom Suites, 640/638/636 or 641/639/637: 1,374 square feet (128 square meters)

Can also be booked as 2 Bedroom Suites, 640/638 or 641/639: 1,097 square feet (102 square meters)

Owner's Suites Midship, 640 and 641 (OW): 820 square feet (76 square meters), both with 3rd berths

Owner's Suites Forward, 600 and 601 (OW): 575 square feet (54 square meters)

Classic Suites, 500 and 501 (CS): 400 square feet (37 square meters)

Deluxe Suites, 431, 531, 627 (DS): 464 square feet (43 square meters), all with 3rd berths

Star Balcony Suites (SBS, SBS1): 277 square feet (26 square meters)

Star Balcony Suites with 3rd berths – 530, 532, 533, 626, 628, 629

Balcony Suites (BS, BS1): 277 square feet (26 square meters)

Balcony Suites with 3rd berths – 506, 507, 606, 607

Star Ocean View Suites (SS1): 277 square feet (26 square meters)

Star Ocean View Suites with 3rd berths – 430, 432, 433

Ocean View Suites (S, S1, S2, S3): 277 square feet (26 square meters)

Ocean View Suites with 3rd berths – 406, 407, 408, 409, 428, 429, 502, 503, 528, 529, 624, 625

Star Porthole Suites (SP): 277 square feet (26 square meters)